

FUGRO TECHNICAL SERVICES LIMITED

Fugro Development Centre,
5 Lok Yi Street, Tai Lam,
Tuen Mun, N.T.,
Hong Kong.

Tel : +852 2450 8233
Fax : +852 2450 6138
E-mail : matlab@fugro.com
Website : www.fugro.com

MaterialLab



Client Ref. : --
Report No. : 164441ST161011(2)

Page 1 of 2

REPORT ON DETERMINATION OF RESISTANCE OF A WALL PARTITION TO DAMAGE BY IMPACT FROM A LARGE SOFT BODY

Information Supplied by Client

Client : Fujian Jumbo New Material Corporation Limited.
Project : Testing of Gypsum Block
Sample Description : "JUMBO" Gypsum Block
Nominal Size : 600 mm x 500 mm x 100 mm (T)
Date Cast : 15 November 2016 to 22 November 2016
Density : 1100kg/m³±5%
Age : --

Laboratory Information

Lab. Sample I.D. : ST161011/1
Test Location : Kam Tin Laboratory of MaterialLab
Address of Test Location : DD111, Lot 3028, Wang Toi Shan Village, Pat Heung, Kam Tin, N.T.
Date Received : 24 October 2016
Date Tested : 28 November 2016
Test Method : BS 5234 : Part 2 : 1992, Annex C
Test Grade : Heavy Duty
Weight of Sand Bag : 49.99 kg

Test Results

Position	Impact Energy (Nm)	Impactor Drop Height (mm)	Displacement of Impact Position (mm)
A	40	82	0.02
B	40	82	0.01
C (Corner)	40	82	0

- Remarks :
- 1.) The test results relate only to the sample tested.
 - 2.) BS Requirement : Permanent deformation ≤ 2 mm and no damage.
 - 3.) The test results **comply** with HKHA SL 2012 MAS1.M210.6 2(d) vi and the acceptance requirements of BS 5234 : Part 2 : 1992 for Heavy Duty Grade.
 - 4.) The test configuration are shown in the photographs on page 2 of this report.

Checked by : i Date : 28 FEB 2017 Certified by : Leung Kwok Tai, Stanley Date : 28 FEB 2017

Leung Kwok Tai, Stanley
Assistant Manager (Product Testing Laboratory)

FUGRO TECHNICAL SERVICES LIMITED

Fugro Development Centre,
5 Lok Yi Street, Tai Lam,
Tuen Mun, N.T.,
Hong Kong.

Tel : +852 2450 8233
Fax : +852 2450 6138
E-mail : matlab@fugro.com
Website : www.fugro.com

MaterialLab

Client Ref. : --

Page 2 of 2

Report No. : 164441ST161011(2)



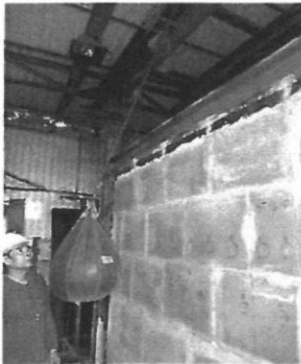
Test Configuration
Sample I.D.: ST161011/1



Test Configuration
Sample I.D.: ST161011/1



Test Configuration
Sample I.D.: ST161011/1



Test Configuration
Sample I.D.: ST161011/1



Test Configuration
Sample I.D.: ST161011/1



Test Configuration
Sample I.D.: ST161011/1



Test Configuration
Sample I.D.: ST161011/1

****End of Report****