

# FUGRO TECHNICAL SERVICES LIMITED

Fugro Development Centre,  
5 Lok Yi Street, Tai Lam,  
Tuen Mun, N.T.,  
Hong Kong.

Tel : +852 2450 8233  
Fax : +852 2450 6138  
E-mail : matlab@fugro.com  
Website : www.fugro.com

# MaterialLab



Client Ref. : --  
Report No. : 164441ST161011(1)

Page 1 of 2

## REPORT ON DETERMINATION OF SURFACE DAMAGE OF A WALL PARTITION BY SMALL HARD BODY IMPACT

### Information Supplied by Client

Client : Fujian Jumbo New Material Corporation Limited.  
Project : Testing of Gypsum Block  
Sample Description : "JUMBO" Gypsum Block  
Nominal Size : 600 mm x 500 mm x 100 mm (T)  
Date Cast : 15 November 2016 to 22 November 2016  
Density : 1100kg/m<sup>3</sup>±5%  
Age : --

### Laboratory Information

Lab. Sample I.D. : ST161011/1  
Test Location : Kam Tin Laboratory of MaterialLab  
Address of Test Location : DD111, Lot 3028, Wang Toi Shan Village, Pat Heung, Kam Tin, N.T.  
Date Received : 24 October 2016  
Date Tested : 28 November 2016  
Test Method : BS 5234 : Part 2 : 1992, Annex B  
Test Grade : Heavy Duty

### Test Results

Impact Position	Angle of Swing (°)	Impact Energy (Nm)	Pendulum Drop Height (mm)	Indentation (mm)	Specification for Acceptance
A	48.2	6	0.2	1.27	Satisfactory, No specific criterion of acceptance is given. Acceptance is on a judgement basis.
B				1.29	
C				1.34	
D				1.28	
E				1.31	
F				1.33	
G				1.32	
H				1.31	
I				1.27	
J				1.31	
K (Corner)				1.38	

Remarks : 1.) The test results relate only to the sample tested.  
2.) The test configuration and the test positions are shown in the photographs on page 2 of this report.  
3.) The test results **comply** with HKHA SL 2012 MAS1.M210.6 2(d) vi and the acceptance requirement of BS 5234 : Part 2 : 1992 for Heavy Duty Grade.

Checked by : i Date : 28 FEB 2017 Certified by : K.T. Leung Date : 28 FEB 2017  
Leung Kwok Tai, Stanley  
Assistant Manager (Product Testing Laboratory)

# FUGRO TECHNICAL SERVICES LIMITED

Fugro Development Centre,  
5 Lok Yi Street, Tai Lam,  
Tuen Mun, N.T.,  
Hong Kong.

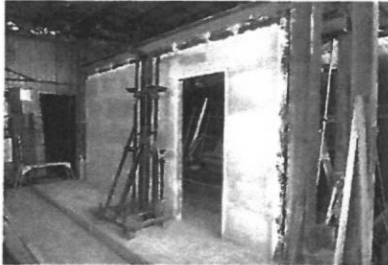
Tel : +852 2450 8233  
Fax : +852 2450 6138  
E-mail : matlab@fugro.com  
Website : www.fugro.com

# MaterialLab

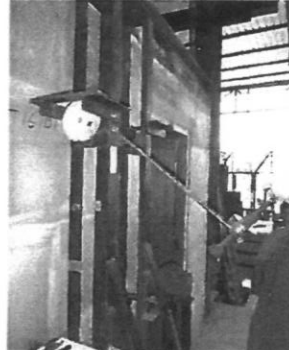
Client Ref. : --

Page 2 of 2

Report No. : 164441ST161011(1)



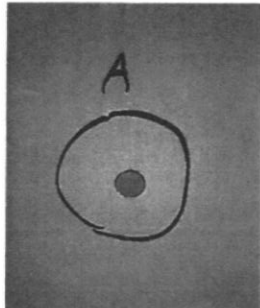
Test Configuration  
Sample I.D.: ST161011/1



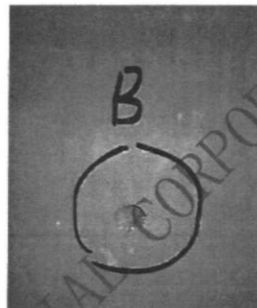
Test Configuration  
Sample I.D.: ST161011/1



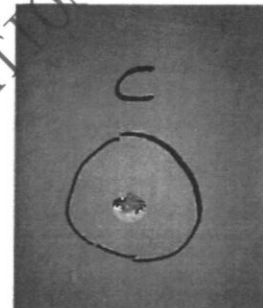
Test Configuration  
Sample I.D.: ST161011/1



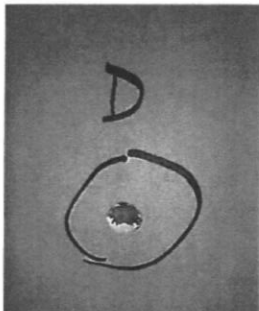
Test Position  
Sample I.D.: ST161011/1



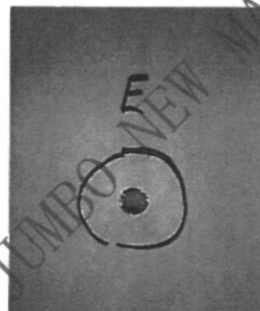
Test Position  
Sample I.D.: ST161011/1



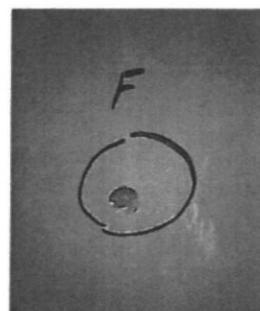
Test Position  
Sample I.D.: ST161011/1



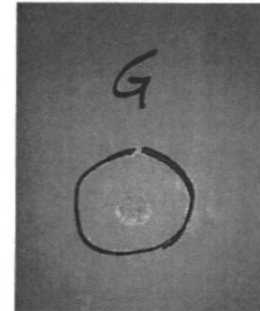
Test Position  
Sample I.D.: ST161011/1



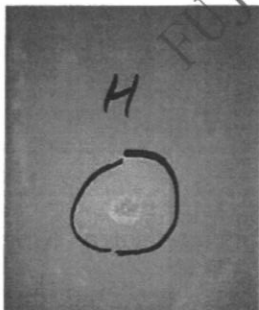
Test Position  
Sample I.D.: ST161011/1



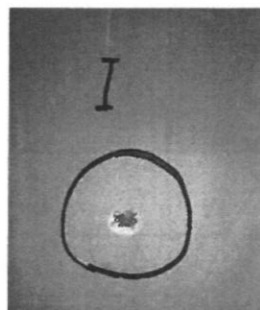
Test Position  
Sample I.D.: ST161011/1



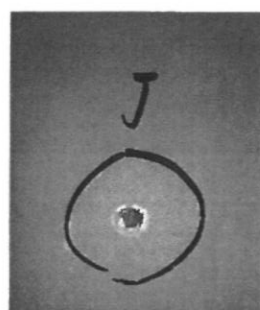
Test Position  
Sample I.D.: ST161011/1



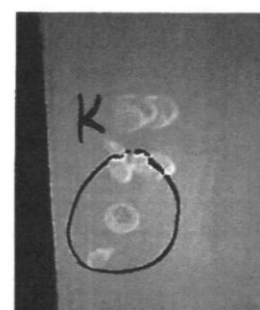
Test Position  
Sample I.D.: ST161011/1



Test Position  
Sample I.D.: ST161011/1



Test Position  
Sample I.D.: ST161011/1



Test Position  
Sample I.D.: ST161011/1

**\*\*End of Report\*\***